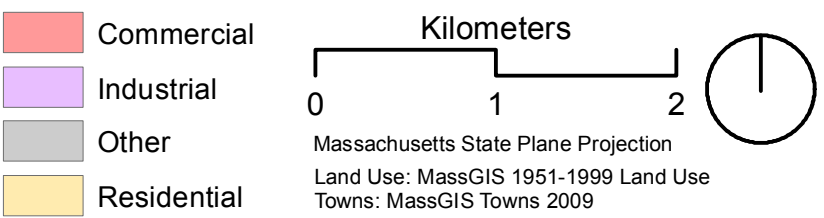
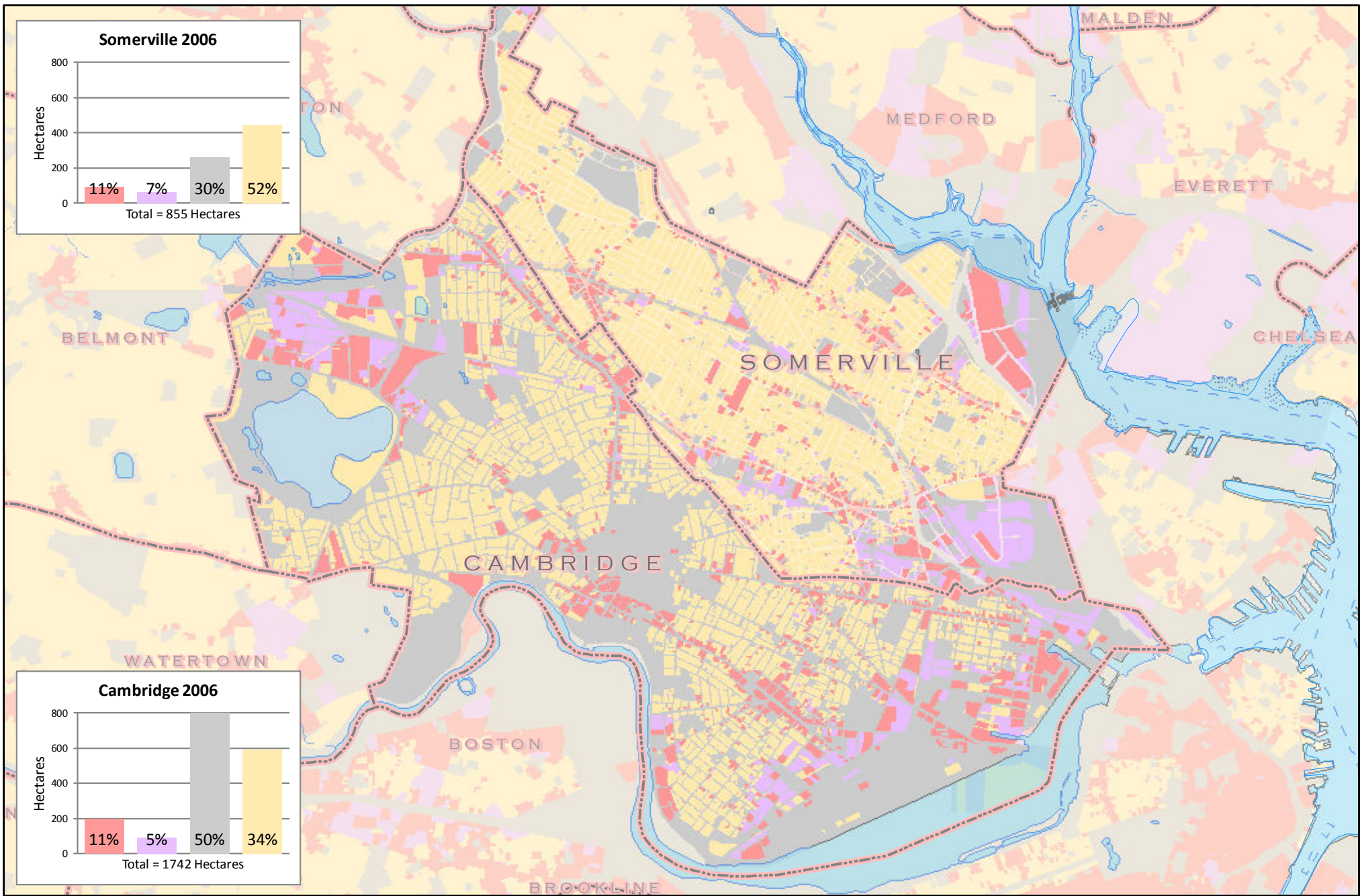


Generalized Aerial Land Use in Cambridge and Somerville, 1999

This comparison of Somerville and Cambridge land use is based on a 1999 state-wide aerial survey, interpreted by the Resource Mapping Project at the University of Amherst, Massachusetts. The minimum mapping unit of 1 acre used in this interpretation makes this a generalized characterization of land use. The original 21 classes created by the RMA were regrouped into four categories for this analysis. Nevertheless, the impression that Somerville and Cambridge have similar proportion of Industrial, Residential and Commercial land. And Cambridge has substantially more land categorized as 'Other.' This land is primarily that land that the RMP characterized in the single classification, Urban Open, which includes open-space and institutional campuses.





Generalized Parcel Land Use in Cambridge and Somerville, 2006

This comparison of Somerville and Cambridge land use is based on a 2006 Tax Assessor Parcel Data, Taxable parcels are assigned one of 200 land use codes prescribed by the Massachusetts Department of Revenue. These classes were regrouped into four categories for this analysis. Comparing this data with the 1999 Aerial interpretation of land use is difficult because of the different methodology used -- including the method and granularity of the observations. The increase in the "Other" class in both maps is owing to the fact that tax assessors typically do not classify land that is not taxable.

Commercial
Industrial
Other
Residential

Kilometers

0 1 2

Massachusetts State Plane Projection

Land Use: Cities of Somerville and Cambridge, 2006

Towns: MassGIS Towns 2009