

Quick start guide

This guide relates to the following stylesheets:

Product: OS Terrain® 50 contours

Data format: ESRI Shapefile

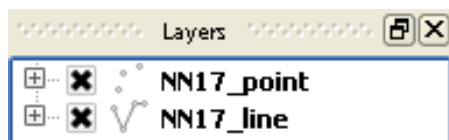
Stylesheet format: QGIS stylesheets (QML)

The stylesheets have been designed to work with the data as it is supplied

- 1 Either fork the stylesheets on [GitHub](#) or [download](#) them and navigate to the directory that matches your data format, stylesheet format and style preference.
- 2 Load your OS Terrain 50 contour ESRI Shapefile data (line and point) into QGIS.
- 3 Double click on a layer to access the 'Layer Properties' window > click on 'Load Style..' > navigate to the directory containing the QML files (those ending .qml) > select the QML file that corresponds to that layer > click 'Open' > click 'OK'.

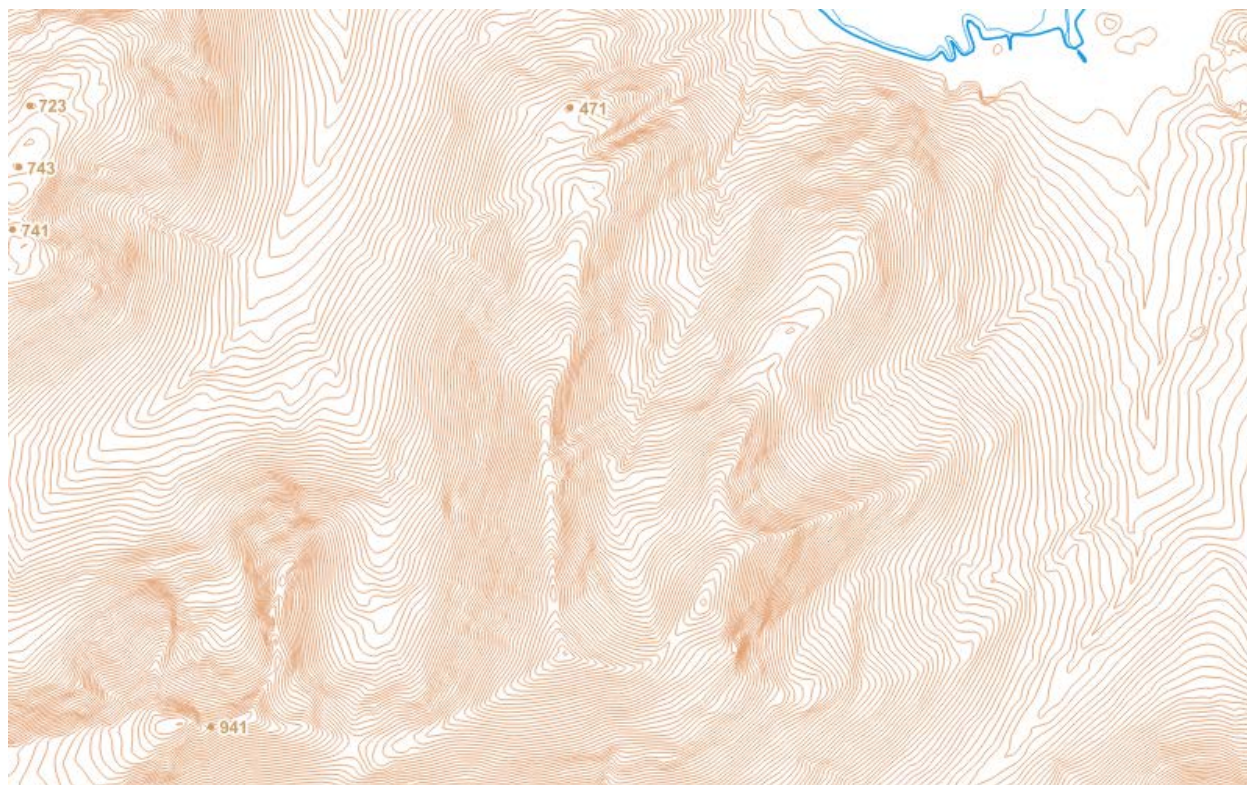
Repeat step 3 for all layers

- 4 We recommend the following layer order:



We recommend viewing the map between 1:1,000 and 1:50,000 for maximum legibility.

Your map should now look similar to this:



Additional information

[More information about how to download, apply and edit our stylesheets including a Stylesheet user guide](#)

[More information about OS Terrain 50](#)

[More information about cartographic design at Ordnance Survey](#)

Licence

By using these stylesheets you are accepting the terms in the [Stylesheet Licence](#)

D11958_OSTerraine50SHP

General information
www.ordnancesurvey.co.uk/contactus

General enquiries
+44 (0)8456 05 05 05

Textphone
+44 (0)23 8005 6146

This document has been screened in accordance with the requirements set out in Ordnance Survey's Equality Scheme.
If you have difficulty reading this information in its current format and would like to find out how to access it in a different format (Braille, large print, computer disk or in another language), please contact us on: +44 (0)8456 05 05 05.

Ordnance Survey, the OS Symbol and OS MasterMap are registered trademarks of Ordnance Survey, the national mapping authority of Great Britain.
Ordnance Survey acknowledges all trademarks. Ordnance Survey © Crown copyright

