

The Working with TIGER/Line Shapefiles series is an overview of how to access and use the US Census Bureau's TIGER/Line Shapefiles. Each pamphlet is a quick how-to guide for accessing and using TIGER/Line Shapefiles as well as joining data from the US Census Bureau to the TIGER/Line Shapefiles.

## WHAT SHAPEFILES ARE AVAILABLE?

3 and 5-digit ZIP Code Tabulation Areas  
Alaska Native Regional Corporations  
American Indian/Alaska Native/Native Hawaiian Areas  
American Indian Area Tribal Subdivisions  
Blocks  
Block Groups  
Census Tracts  
Combined New England City and Town Areas  
Combined Statistical Areas  
Congressional Districts  
Consolidated Cities  
Counties and equivalents  
County Subdivisions  
Landmarks (Point and Area)  
Metropolitan/Micropolitan Statistical Areas  
Metropolitan Divisions  
Military Installations  
New England City and Town Areas  
New England City and Town Area Divisions  
Places  
Public Use Microdata Areas  
Roads, Rails, etc. (in All Lines file)  
School Districts – Elementary, Secondary and Unified  
States and equivalents  
State Legislative Districts – Upper and Lower Chambers  
Urban Areas  
Voting Districts  
And Many, Many More

ArcGIS™ is a Trademark of Environmental Systems  
Research Institute, Inc. (ESRI).

TIGER/Line® is a Registered Trademark of the US Census Bureau.

## Working with TIGER/Line Shapefiles Series:

1. Downloading TIGER/Line Shapefiles
2. Opening TIGER/Line Shapefiles into ArcGIS
3. Downloading Data from American FactFinder to use with TIGER/Line Shapefiles
4. Joining Census Data to TIGER/Line Shapefiles
5. Creating a Thematic Map

## Questions about TIGER/Line® Shapefiles?

Visit:

<http://www.census.gov/geo/www/tiger>

E-mail:

[geo.tiger@census.gov](mailto:geo.tiger@census.gov)

Call:

(301) 763-1128

## Don't have ArcGIS™?

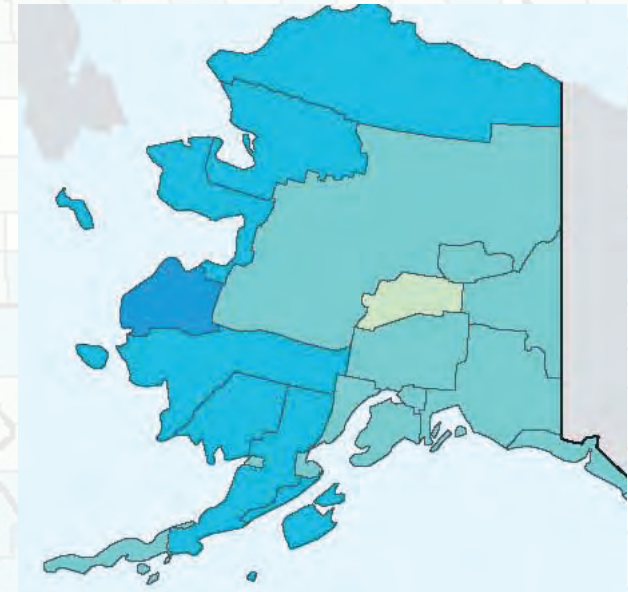
Download ArcGIS Explorer for **free** from ESRI at:  
<http://www.esri.com/software/arcgis/explorer>



Geographic Products Branch  
Geography Division  
US Census Bureau  
June 2009

## WORKING WITH TIGER/LINE SHAPEFILES

### *Opening TIGER/Line Shapefiles in ArcGIS*





## GETTING STARTED

These instructions are for the 9.x versions of ArcGIS. ArcMap 9.2 is shown throughout the brochure series.

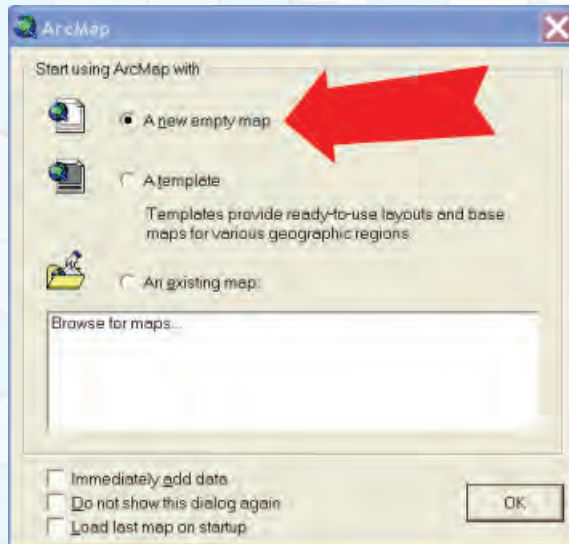
Have the TIGER/Line Shapefiles unzipped in a location on your computer.

The location of menus and tools is highly customizable in ArcGIS. Therefore, the way the screen looks in the graphics may not be the same as your settings.

## OPENING ARCMAP

ArcMap may or may not open with a splash screen depending on your computer settings.

*If you don't see a splash screen skip to the next section.*



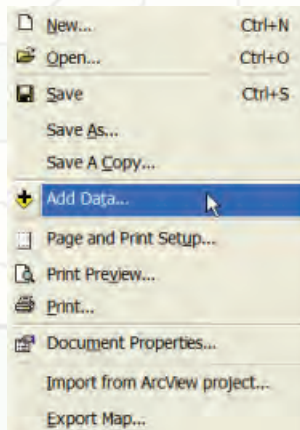
Select to Start with "A new empty map"

*If you do not want to see this screen in the future check the box near the bottom that says "Do not show this dialog again"*

## ADDING SHAPEFILES

The TIGER/Line Shapefiles are considered layers in ArcMap. To add data:

File Menu -



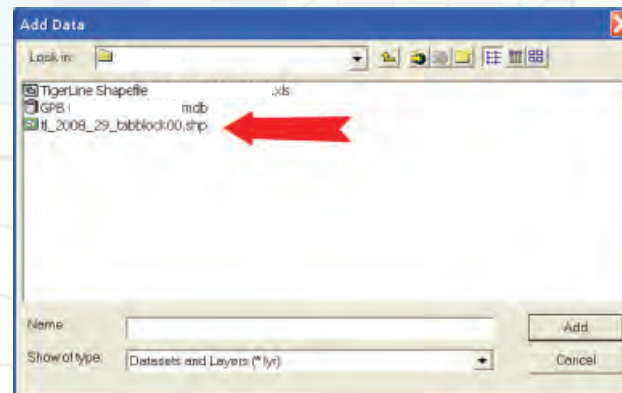
OR

Add Data Icon



## NAVIGATE TO FILES

Go to the location on your computer where you placed the unzipped TIGER/Line Shapefiles.



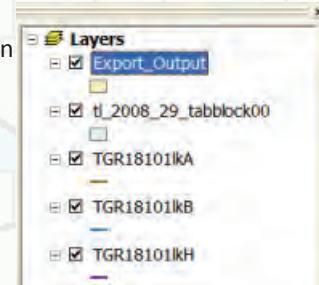
You can add multiple files at a time by holding the "CTRL" key and selecting multiple individual files or the "Shift" key to select a continuous listing of files.

If you don't see your shapefiles in the selection box or you get an error message, verify that you unzipped ALL of the files.

## MANIPULATING SETTINGS

The shapefiles are now visible on the map. You can now change the display order of your shapefiles, the colors of the layers, the zoom level, the file projection, and much more.

REORDER – Select the layer you want to move, hold down the mouse, and drag it to a new location in the order.



COLORS – Click the mouse in the colored box below the layer name and select a new color.

ZOOM – Magnifying Glass on "Tools" toolbar or scale on the Standard Toolbar. Use magnifying glass tool - plus to zoom in, minus to zoom out. Or type in a new scale in the box on the Standard Toolbar.



PROJECTION – Select "View – Data Frame Properties." Select Coordinate System and choose a predefined projection or create a custom one. By default TIGER/Line Shapefiles are in Geographic - GCS North American NAD83 projection.

MUCH MORE – There are many ways to manipulate the look of your map. Check out the many toolbars available under the "View" menu.

## SAVING YOUR MAP

To save all of the settings changes, save the map. Use the File – Save menu or the Disk icon to save the map. This creates an .mxd file which maintains all of the settings you have (color, projection, zoom, ordering of layers, layout, etc.)

The next time you return to ArcMap use the File – Open option and find your project. The map will open with all of the settings you last saved on this map.