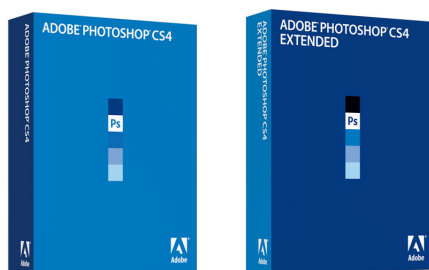


# ADOBE® PHOTOSHOP® CS4

Create powerful images with the professional standard

## ADOBE PHOTOSHOP CS4 EXTENDED

Discover new dimensions in digital imaging



**Adobe Photoshop CS4 is also available as a component of:**

- Adobe Creative Suite® 4 Design Standard

**Adobe Photoshop CS4 Extended is also available as a component of:**

- Adobe Creative Suite 4 Design Premium
- Adobe Creative Suite 4 Web Premium
- Adobe Creative Suite 4 Production Premium
- Adobe Creative Suite 4 Master Collection

Digital images are everywhere—from the photography studio to the X-ray lab, from the glossy magazine to your website. With two new versions and a heap of new features and enhancements, wherever great digital images are found, Photoshop is there.

Adobe Photoshop CS4 refines and redefines the professional image-editing experience, with faster, nondestructive ways to accomplish core tasks like image adjustments and masks, and new tools and enhancements that let you work more easily, efficiently, and naturally.

Photoshop CS4 Extended starts with the complete set of features found in Photoshop CS4, and adds others designed specifically for professionals working with specialized image types and multimedia workflows. With breakthrough 3D editing and compositing features, richer motion-graphics capabilities, and enhanced image analysis functions, Photoshop CS4 Extended broadens your reach beyond traditional digital images.



This icon marks features in this document that are exclusive to Photoshop CS4 Extended. All other content is common to both versions of the software.



Photoshop CS4 and Photoshop CS4 Extended feature a newly refined, tab-based interface in a single, integrated window, with self-adjusting panels arranged in docked groups. Automatically keeping tools well organized and away from your work area means you get greater efficiency, less clutter, and better results, faster than before.

## Top new and enhanced features in Photoshop CS4 and Photoshop CS4 Extended

- Live, nondestructive corrections with the Adjustments panel (page 2)
- Re-editable, feathered, density-controlled masks (page 3)
- More refined, natural results with Dodge, Burn, and Sponge (page 3)
- Enhanced Auto-Align, Auto-Blend, and new 360° panoramas (page 3)
- Content-Aware Scaling (page 4)
- Extended depth of field (page 5)
- Fluid canvas rotation (page 5)
- Ultra-smooth pan, zoom, preview, and painting tools (page 6)
- Next generation Adobe Bridge CS4 (page 6)
- Tighter integration with Adobe Photoshop Lightroom® (page 7)
- Camera Raw 5 with localized, nondestructive adjustments (page 7)
- Breakthrough 3D editing and compositing (page 7)
- Enhanced motion graphics (page 8)
- Volume Rendering (page 8)
- Easier data collection and analysis with the Count tool (page 9)
- Unified tabbed interface with self-adjusting panels (page 9)
- Smarter Smart Objects (page 10)
- More powerful printing options (page 10)
- Higher performance on very large images (page 10)
- Additional refinements (page 10)
- Creative Pro Online Services (page 11)

With Photoshop CS4 and Photoshop CS4 Extended, you get:

**Unrivaled editing power.** New Adjustments and Masks panels slash the time it takes you to make nondestructive color and tone adjustments, and to create and re-edit feathered, density-controlled pixel and vector masks. With on-image controls and presets, there's less time mousing between settings. Fine modifications are faster and easier with additions like the new Vibrance adjustment layer and enhanced Color Range mask creation. And Content-Aware Scaling is the revolutionary new feature that automatically recomposes an image as you resize it, smartly preserving vital areas as it adapts to the new dimensions.

**Increased productivity.** Work more efficiently and naturally with fluid, natural canvas rotation, enhanced pan and zoom tools, and effortless large-image navigation. Vastly improved Dodge, Burn, and Sponge tools let you intelligently and accurately adjust the exposure and color of image areas using simple brush strokes. Photoshop CS4 tools combine increased power and finer control with easier, more naturally controlled effects to boost productivity, no matter how you work with digital images.

**Breakthrough 3D, motion graphics, and image analysis capabilities.** In Photoshop CS4 Extended, you can now work with 3D objects and video frames as easily as with any traditional image. Paint directly on 3D objects. Combine 2D layers and video files into 3D layers. Easily convert any image into a 3D object or volume. And do it all with a brand new 3D engine that provides dramatic performance and capability improvements. In motion graphics, single-key shortcuts let you move through and edit video layers faster and more precisely than before, and new controls enable you to preview and export audio tracks as well. Image analysis improvements include multiple counts with the Count tool and volume rendering of DICOM files.

See what's possible, with Adobe Photoshop CS4 and Photoshop CS4 Extended.

## Top new features in Photoshop CS4 and Photoshop CS4 Extended

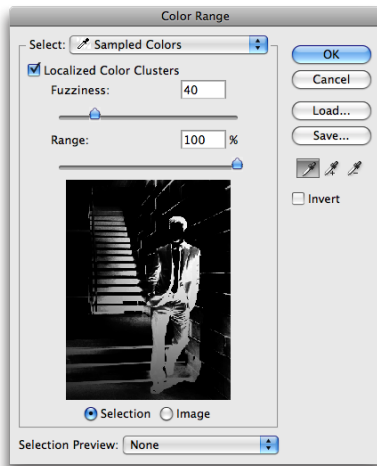
The new versions of Photoshop are about much more than just adding new features. They're about providing you with best practices in the tasks you do daily—about making your work in Photoshop not just faster and easier, but more intelligent, and more natively nondestructive. Here are the top new features and enhancements in Photoshop CS4 and Photoshop CS4 Extended.

### Live, nondestructive corrections with the Adjustments panel

Photoshop CS4 speeds workflow performance with the Adjustments panel, cutting the time it takes to make nondestructive adjustments like Curves, Levels, Hue/Saturation, and much more. There's no dialog box maze to navigate—just go straight to the task at hand. The Adjustments panel brings the right tool for the right job to your fingertips, dynamically, saving precious time. The panel features the new Vibrance adjustment, giving you greater control over color saturation while preserving delicate tones, such as skin colors. On-image adjustments are now available for Hue/Saturation and Curves. Plus, for even greater convenience and time savings, the panel features a wide variety of modifiable presets for each type of change, including more than 20 new preconfigured, customizable starting points.



The new Adjustments panel helps eliminate up to 90% of the mouse movements required to make nondestructive image adjustments.



Color Range is now more versatile and effective. Automatically create powerful, detailed masks based on multiple colors, with better control over the selected range.

## Re-editable, feathered, density-controlled masks

The new Masks panel smooths and speeds the creation and adjustment of pixel and vector masks, making it easier than ever to apply effects to precisely defined areas of an image. Now, with simple sliders, you can adjust the density and feathering of a mask, to control both the sharpness of the mask edge and how much of the adjustment effect you'd like to reveal. The Refine Mask feature allows simple yet fine-grained control over the mask size and edges. And Color Range has been upgraded for better accuracy and power. It's a fast way to automatically create powerful and detailed masks based on single or multiple colors, with simple controls for the spatial tolerance and "fuzziness" of the color sampling.



The Masks panel speeds precise mask creation and editing, with controls for density, multiple-color range selection, and effective edge refinement.

## More refined, natural results with Dodge, Burn, and Sponge

In the days of film, paper, safelights, and chemicals, photographers dodged and burned their prints during exposure, to darken and brighten areas of an image as they created it. It was an art that required steady hands and practice to master. The newly refined Dodge, Burn, and Sponge tools in Photoshop CS4 take the pain and practice out of preserving tonal quality while you spot-correct exposure and color saturation. Simply paint the area you want to adjust and get advanced results in a fraction of the time.



Spot color and exposure adjustments are more natural with the improved Dodge, Burn, and Sponge tools.

## Enhanced Auto-Align, Auto-Blend, and new 360° panoramas

The automatic alignment and blending technology in Photoshop CS4 enhances a wide variety of features, but nowhere are the improvements more obvious than in Photomerge®. Now, when you stitch a sequence of images into a panorama, enhanced blending combines with new vignetting and geometric distortion corrections to bring you even better results—a panorama with more natural colors blended from one end of the scene to the other. Additional improvements include the ability to create 360-degree panoramas,

automatic detection of fish eye lenses to compensate for their inherent distortion, and the new Collage option which rotates and scales individual images as they are combined using Auto-Align and Photomerge.

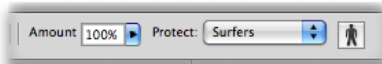
Enhanced Auto-Blend technology automatically masks and blends frame edges for better results on panoramas.





## Content-Aware Scaling

Imagine you have an image that is ideal for a new project, except the proportions are wrong. Maybe it's a full-frame 8x12-inch photograph you want to fit into an 8x10-inch frame, or a 8x10-inch image you want to crunch down to a panoramic, *without sacrificing the people or important background*. Up to now, getting these results was so time-consuming a process that it was virtually impossible. With Content-Aware Scaling, the near-impossible becomes the near-instantaneous success. Content-Aware Scaling is the revolutionary new feature in Photoshop CS4 that lets you resize and recompose simultaneously, with no more effort than it takes you to simply resize an image. As the name implies, the feature analyzes the image in the background while you adjust it, and intelligently recomposes the scene to preserve the most visually interesting areas. Content-Aware Scaling automatically recognizes skin tones to keep people from being squeezed out of the shot, and for more fine-grained control, selection tools let you easily define the most important areas before you begin scaling.



Intuitive controls on the options bar let you adjust the content to be protected from change during Content-Aware Scaling.

To begin, simply select any unlocked layer in a Photoshop document, and then either choose Edit > Content-Aware Scale, or press Command-Option-Shift-C (Mac OS X) or Ctrl-Alt-Shift-C (Windows). Resize the image by dragging the corner or side controls, exactly as if you were doing a crop or free transform. If you want to define a protection area first, use any selection tool to select the vital area, then choose Select > Save Selection to save it as a new alpha channel. Choose a saved selection from the Protect menu to constrain the new composition when you adjust the image with Content-Aware Scaling.



The original photograph



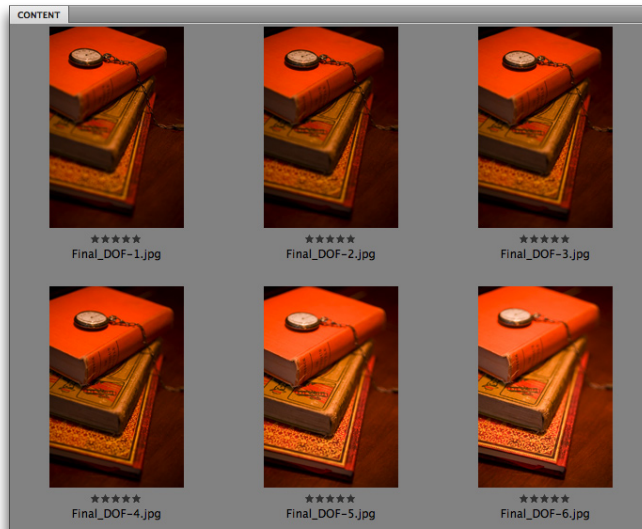
Resized to fit a narrow column width for a print layout or mobile device—the elements in the photograph are the same, but the perspective appears shifted.



Resized for use as a web banner

## Extended depth of field

Whether it's the extreme close-up, the microbial world, or simply low-light conditions, there are times when the depth of field you can capture with your camera is extremely shallow. Now, you can shoot the scene with a series of focal points, and use the enhanced Auto-Blend Layers feature to automatically create a new, single image with a depth of field encompassing the entire series. You can even color-correct the images at the same time, automatically. This feature provides breathtaking enhancement of any scene where lighting and depth of field are in short supply.



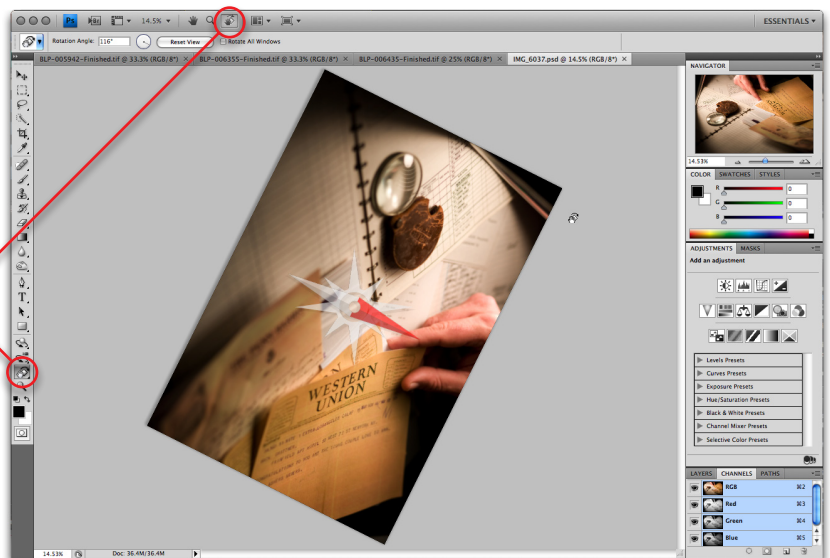
A range of shots, each with different exposure, color, and focal points (left) automatically becomes a single, color-corrected, expanded depth-of-field image with Auto-Blend Layers.

## Fluid canvas rotation

Photoshop CS4 introduces a revolutionary new feature that lets you paint and draw as easily and naturally as sitting down at an easel. With the new Rotate View tool, you can nondestructively spin your canvas to any orientation you desire—a boon to every illustrator, whether you paint by mouse or tablet. No pixel distortion, no craning your head to get the perspective you want, and no matter how you spin your canvas, Photoshop CS4 adjusts your selections, grids, rulers, and other tools and features to match your chosen orientation.

Access the Rotate View tool in the new Application Bar at the top of the Photoshop application frame, or in the Tools panel, where it is grouped with the Hand tool.

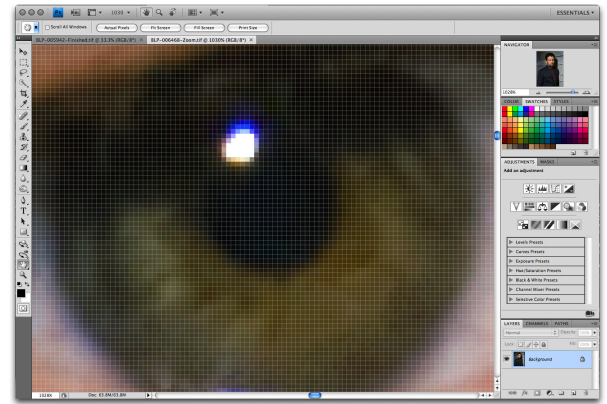
Simply drag the new Rotate View tool outside the image area to spin your canvas to the orientation that works best for you.





## Ultra-smooth, extra-precise pan, zoom, preview, and painting tools

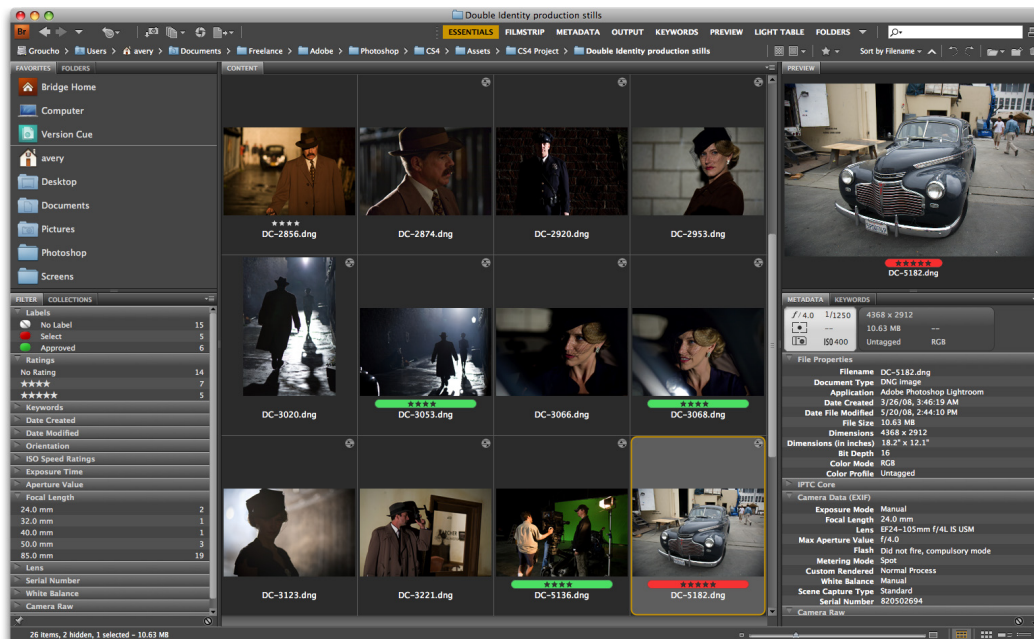
Most modern computers contain a powerful graphics processor (GPU) that is almost like having a second computer inside the box. Photoshop CS4 leverages the power of your GPU with OpenGL technology to blast past the image-viewing restrictions of yesterday. Zoom all the way down to the level of individual pixels, with perfect clarity even at the oddest magnification percentages. Smoothly navigate around the largest images with no stutter or preview lag. Use the new Pixel Grid to easily edit images at the highest magnification. And revel in a faster, easier painting workflow, with brushes you can resize by dragging your mouse; new brush cursors that more clearly preview brush strokes before you make them; and improved, higher precision tablet tracking. Navigating very large images is easier than ever—instantly zoom high overhead to move to a new area of the image, and just as instantly zoom back in to the highest magnification. You can also “toss” the image across the screen with the Hand tool—the physics engine in Photoshop CS4 will give you a natural pan in any direction.



The new Pixel Grid appears at magnifications of 600% or higher, facilitating the finest detail editing.

## Next generation Adobe Bridge CS4

Finding, previewing, and managing all of your image assets jumps to a new level of power and convenience with Adobe Bridge CS4, beginning with faster performance from startup through to handing off images to Photoshop CS4. New path-bar navigation and workspace selection buttons across the top of the Bridge window let you instantly jump to just the right display for every task, including new Camera Import controls, visual folder navigation, and



Bridge CS4 makes it easier to work with all of your image assets, with intuitive, easily discoverable controls for camera import, viewing and sorting, contact-sheet and web-gallery creation. You'll also find more versatile throughput to Photoshop CS4, including opening multiple files as a single, multi-layered image, and much more.

a new Carousel View for larger image-group selections. In the Output workspace, Bridge now features PDF-based contact-sheet creation and web-gallery creation and uploading. You can preview 3D images and panoramas created in Photoshop CS4. The new Search field helps you quickly find images in Bridge, and is also integrated with the Spotlight feature in Mac OS X and the Desktop Search feature in Windows® Vista™. You can even switch to the new, intuitive List View, with its familiar data display and sorting controls.

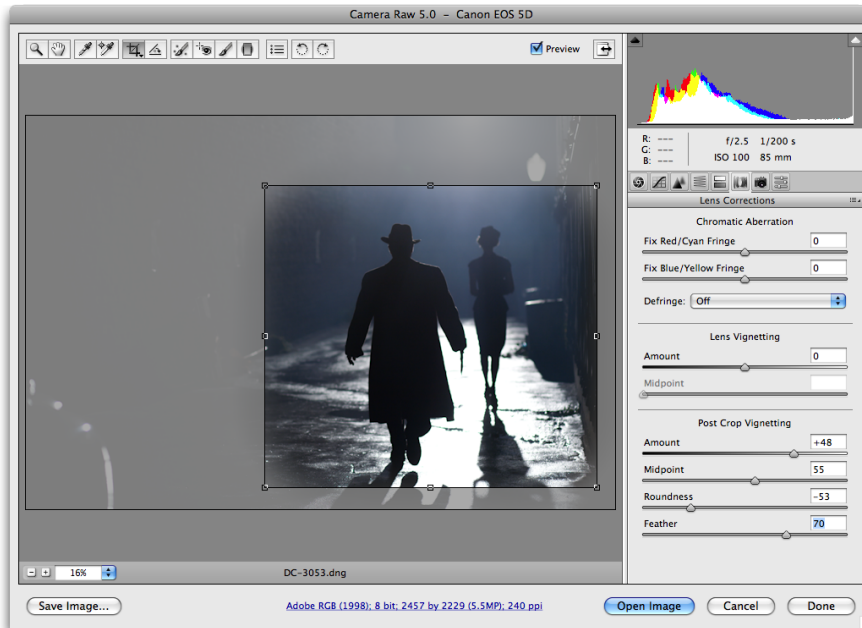
## Tighter integration with Photoshop Lightroom 2

Professionals and other advanced photographers rely on the one-two punch of Adobe Photoshop and Photoshop Lightroom software as the complete digital photography toolkit. Photoshop CS4 makes this workflow easier than ever, with improved cross-application support for automated functions, such as opening multiple photographs from Lightroom 2 directly into a layered Photoshop document, high dynamic range (HDR) image, panorama, or Smart Object. Lightroom 2 and Adobe Camera Raw also share the same underlying

technology, which means the changes you make with Camera Raw 5 in Photoshop CS4 are recognized in Lightroom 2, and vice versa.

## Camera Raw 5 with localized, nondestructive adjustments

Providing the first step in the processing of raw data from your digital camera, Camera Raw now enables you to make localized adjustments by simply painting the area to be affected, and then using sliders to control the change. Additional enhancements include Post Crop Vignetting, and gradient-based localized correction. You can apply the same Camera Raw adjustments to TIFF and JPEG photographs, and, as always, the corrections you make are completely nondestructive, with the original files being maintained in their pristine state.

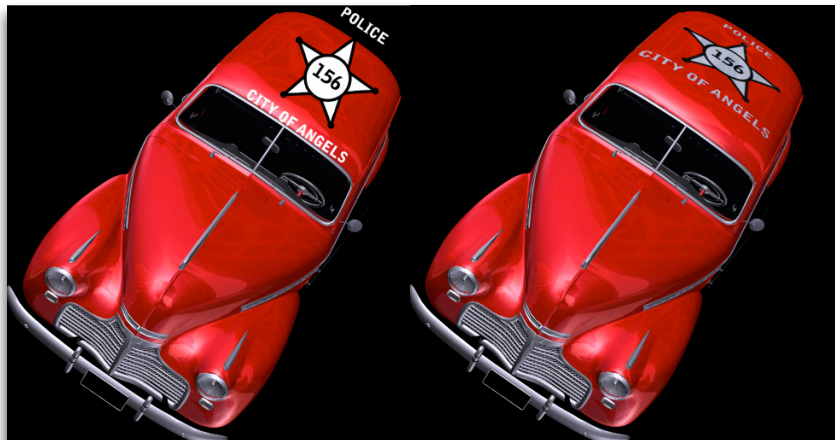


New Post Crop Vignetting lets you recreate artistic vignette effects in a photograph even after the original edge of the photo has been cropped away.



## Breakthrough 3D editing and compositing

With Photoshop CS4 Extended, you can now work with 3D models as easily and powerfully as you can 2D images, without navigating dialog boxes and special layer contents. For the first time, you can paint directly on 3D models, easily convert 2D images or gradient maps into 3D objects, and convert layers into volumes. Wrap a flat design onto a 3D object by merging the 2D layer directly onto your 3D layer. Merge two different 3D layers into a single scene. You can even use video layers as textures, to turn any 3D object into a video display zone. Basic presets will speed the process of turning two-dimensional designs into common 3D shapes such as spheres and cylinders. You can also export 3D layers directly to the OBJ, KMZ, Collada, and U3D file formats. It all means that every creative professional can now take immediate advantage of three-dimensional assets created in today's high-end modeling



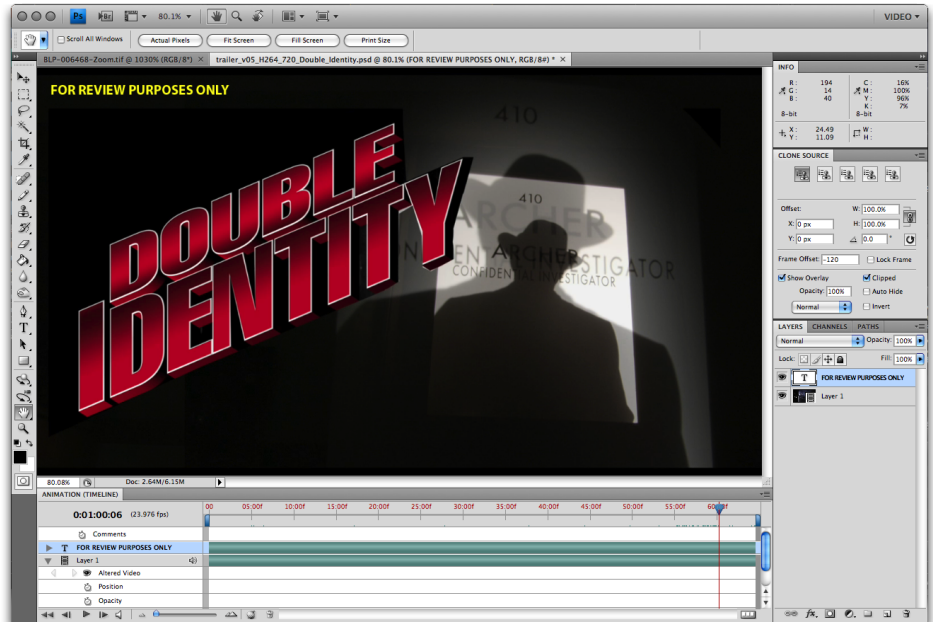
Enhancements to 3D support in Photoshop CS4 Extended include the ability to merge 2D layers onto 3D layers—effectively turning a 2D image into part of the 3D object.

applications, and use them in their 2D mock-ups and composites. The 3D engine has been rebuilt from the ground up to provide dramatically faster performance; allow editing of properties like lights, materials, and cameras; and create more realistic renderings with a new high-quality ray tracer.



## Enhanced motion graphics

Adobe Photoshop is an essential part of the motion graphics workflow, and Photoshop CS4 Extended makes that workflow more efficient than ever, starting with the enhanced preview of non-square-pixel images. Easily preview and export the audio content of a video file as well as its frame comments. New keyboard shortcuts are enabled for the Animation panel to make fast work of editing between frames and keyframes. You can now animate the 3D object and camera position, render settings, and cross-sections, bringing new depth to motion-graphics editing. When working with 3D objects, you can even place video layers into your textures, turning any 3D object surface into a video display screen. Especially for film and television professionals, Adobe After Effects® CS4 can now directly read and import 3D layers from Photoshop CS4 files.

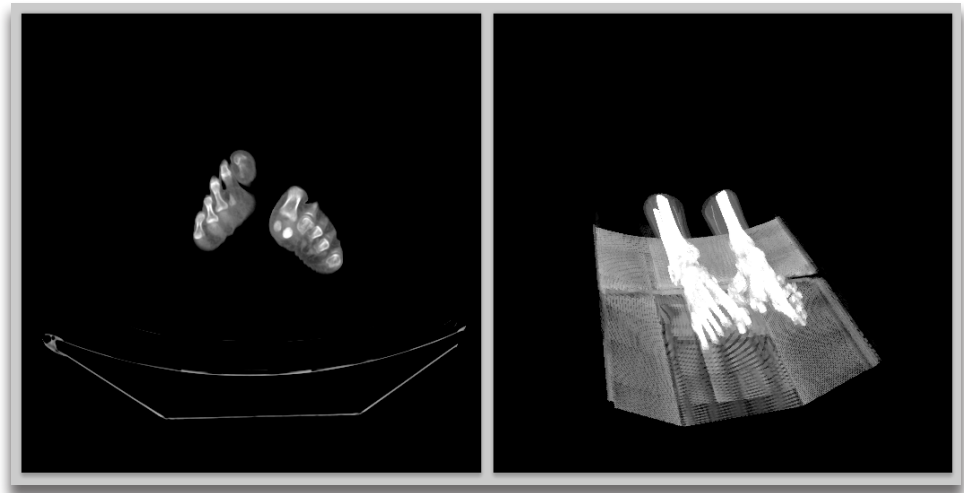


Preview and export audio tracks and frame comments from the Animation panel in Photoshop CS4 Extended.



## Volume Rendering

Volume Rendering is a new way to easily convert text, shape, or pixel layers into a volume. Artists can combine painted layers into entirely new and eye-catching 3D volumes. Motion graphics professionals can quickly turn text layers into animated 3D text. Medical professionals can volume render a DICOM image stack into a 3D anatomical image that can be viewed and explored from all angles and depths. Whether the goal is creative or scientific, Photoshop CS4 Extended adds exciting new capabilities with Volume Rendering.



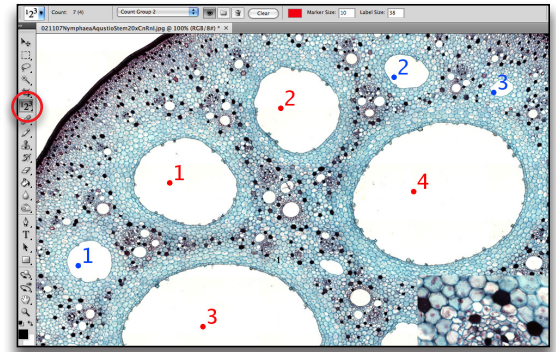
With Volume Rendering, the 2D images from a DICOM stack (left) become rich, 3D volumes that can be examined from any orientation.





## Easier data collection and analysis with the Count tool

Allowing fast, simple, point-and-click tallying of objects in scientific images, the Count tool is expanded in Photoshop CS4 Extended to allow for multiple counts, as well as separate colors for each count. This data is easily saved into the file for future reference, and can be collected in the Measurement Log panel for comparison and export to standard text files.



Perform multiple counts with the enhanced Count tool.

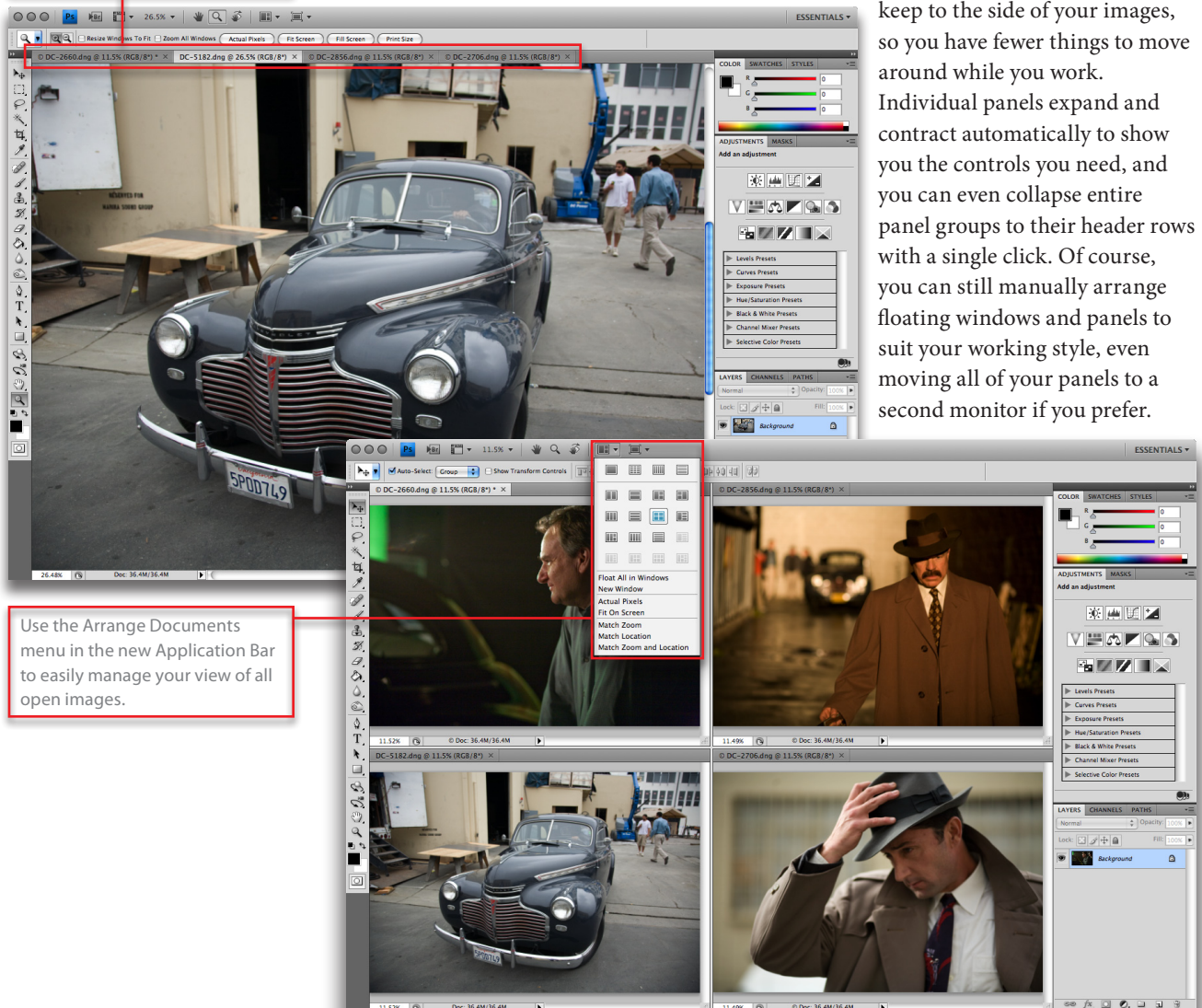
## Unified tabbed interface with self-adjusting panels

Photoshop CS4 helps you keep your work area efficient and clutter-free, with a new unified application frame, tab-based interface and self-adjusting panels. You'll notice immediately how the Photoshop interface appears cleaner—instead of having to arrange multiple image windows, Photoshop does it for you with a tab for each open image. Docked panel groups

keep to the side of your images, so you have fewer things to move around while you work.

Individual panels expand and contract automatically to show you the controls you need, and you can even collapse entire panel groups to their header rows with a single click. Of course, you can still manually arrange floating windows and panels to suit your working style, even moving all of your panels to a second monitor if you prefer.

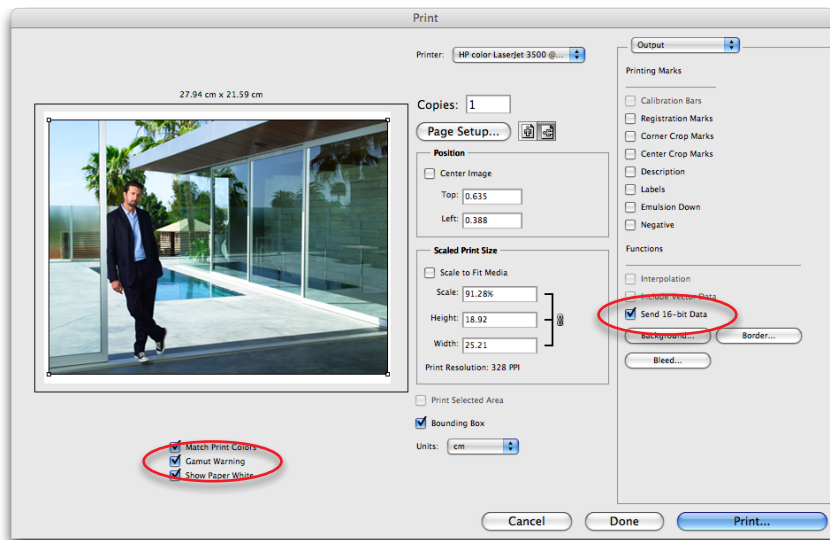
Working with multiple images is simple and clutter-free with the new tab-based interface.



Use the Arrange Documents menu in the new Application Bar to easily manage your view of all open images.

## Smarter Smart Objects

Smart Object layers allow for nondestructive scaling and transformation of Photoshop layers. With Photoshop CS4, you can now apply perspective transformations to Smart Objects, work with linked layer masks, and use the new Eyedropper tool option to sample either the current layer or all of the layers in the Smart Object at once.



Printing improvements in Photoshop CS4 include 16-bit printing (Mac OS X only) and preview of out-of-gamut colors.

## More powerful printing options

Photoshop CS4 brings even higher quality to large, detailed images when taken to print. You can now preview out-of-gamut colors and take advantage of a streamlined printing interface. In addition, only on Mac OS X for this release, 16-bit printing is available for the first time, vastly increasing the color depth and clarity possible in printing.

## Higher performance on very large images (Windows 64 only)

Photoshop CS4 has now been optimized to take advantage of even more RAM on 64-bit-capable Windows PCs that are running a 64-bit version of Windows Vista.

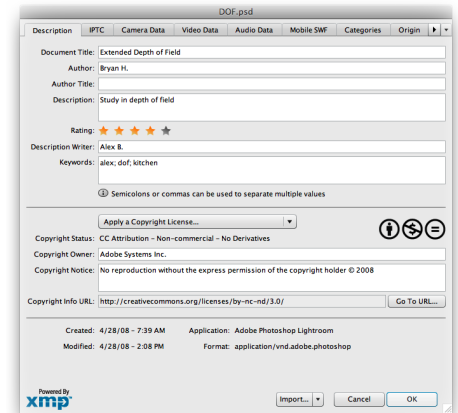
## Additional refinements

The evolution of Photoshop software always includes a vast array of small but important improvements and additions. Extra refinements in Photoshop CS4 include:

- Support for multi-touch gestures available on newer Apple MacBook Pro and MacBook Air computers running Mac OS X Leopard
- Clone Stamp and Healing Brush live preview cursor for easier, more precise cloning and healing results
- Layer-based metadata enabling reading and writing strings to layer properties, such as recording time-stamp information for video
- Developers of specialized applications can create custom SWF-format panels that smoothly integrate with Photoshop CS4
- Extensible SWF-based File Info panel, enabling developers to add network-stored keywords, perform spell-checking, and other functions
- Unique IDs per document for easier downstream tracking of assets
- CUDO technology, providing the ability to design with sensitivity for color blind individuals via soft-proofing
- Spring-loaded keys to temporarily shift between tools by holding down a tool shortcut key
- FXG export
- Device Link color profile support
- Notes panel, to keep annotations from cluttering the canvas



The Clone Stamp and Healing Brush tools now feature a live preview of the source pixels at the cursor, making it easier than ever to precisely replace or heal specific areas of an image.



The File Info panel is now based on the SWF format, for greater extensibility.

## Creative Pro Online Services

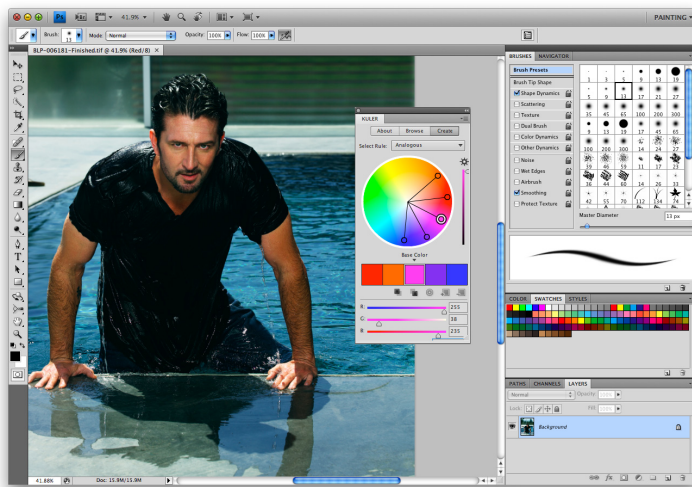
Photoshop CS4 gives you built-in access to a world of online resources with Creative Pro Online Services. Search for help; share your screen with colleagues or clients in a few clicks; create and share color harmonies; and more.

**Adobe Community Help.** Get the power of an online search engine with targeted results. Searchable content includes the in-depth Photoshop Help, plus additional Adobe and third-party content chosen by experts at Adobe and in the design and production communities. With Adobe Community Help, you can find the focused answers you need, fast, simply by choosing Help > Photoshop Help (Internet connection required).

**Adobe ConnectNow.** Share your screen and collaborate in real time with colleagues, clients, and peers—regardless of their location—using ConnectNow. Show your desktop to two online guests at a time at no additional service charge. Exchange ideas using the accompanying chat pod, add a live video or audio feed to enhance your session, or use the annotation feature to allow guests to draw on the active screen. You can even temporarily hand over control of the screen to one of your guests so that they can make adjustments to your file. Simple to use, easy to access, and with reliable cross-platform support,

ConnectNow allows you to more readily share knowledge, get immediate feedback, and streamline your work. Just choose File > Share My Screen to start a ConnectNow session (Internet connection required).

**Adobe Kuler™.** Explore, create, and share color themes with Adobe Kuler. Kick-start your creative projects with color inspiration from the online Kuler community. Browse thousands of themes by newest, most popular, or highest rated; or search themes by tag word, title, or creator. Themes can be downloaded and moved to your Swatches panel with one click. Or use an interactive color wheel that supports standard harmony rules to develop new color themes that you can save, move to your Swatches panel, and upload to share with others (Internet connection required for community functionality).



The integrated Adobe Kuler panel makes it simple to browse, create, and share color themes online.

**Adobe Bridge Home.** Click Bridge Home in the Favorites panel of Adobe Bridge CS4 and stay up to date with what's new from Adobe, and from the design, web development, and video and audio production communities at large. Watch the latest video tutorials for your Creative Suite 4 components, listen to a podcast interview with a leading designer, or learn about the next training event in your community. Discover tips and resources that can help you make the most of Photoshop CS4 (Internet connection required).

## Part of the Adobe Creative Suite 4 family

Adobe Photoshop CS4 and Adobe Photoshop CS4 Extended are important components of the Adobe Creative Suite 4 family of software. Creative Suite 4 Design Premium is everything a modern designer needs to create eye-catching images, breathtaking graphics, expert typography, precision layout, and high-quality production for print, web, interactive, and mobile content. Creative Suite 4 Web Premium is a complete solution for creating interactive websites, applications, user interfaces, presentations, mobile device content, Adobe AIR™ applications, and other digital experiences. Creative Suite 4 Production Premium is must-have software for creative professionals who need to craft world-class video, audio, and interactive media—on-air, online, on-device, and invariably on deadline. Creative Suite 4 Master Collection is the complete solution for customers requiring the ultimate power and versatility of the complete line of Adobe Creative Suite 4 components.



## Mac OS

- PowerPC® G5 or multicore Intel® processor
- Mac OS X v10.4.11–10.5.4
- 512MB of RAM (1GB recommended)
- 2GB of available hard-disk space for installation; additional free space required during installation (cannot install on a volume that uses a case-sensitive file system or on flash-based storage devices)
- 1,024x768 display (1,280x800 recommended) with 16-bit video card
- Some GPU-accelerated features require graphics support for Shader Model 3.0 and OpenGL 2.0
- DVD-ROM drive
- QuickTime 7.2 software required for multimedia features
- Broadband Internet connection required for online services

## Windows

- 1.8GHz or faster processor
- Microsoft® Windows® XP with Service Pack 2 (Service Pack 3 recommended) or Windows Vista Home Premium, Business, Ultimate, or Enterprise with Service Pack 1 (certified for 32-bit Windows XP and 32- and 64-bit Windows Vista)
- 512MB of RAM (1GB recommended)
- 1GB of available hard-disk space for installation; additional free space required during installation (cannot install on flash-based storage devices)
- 1,024x768 display (1,280x800 recommended) with 16-bit video card
- Some GPU-accelerated features require graphics support for Shader Model 3.0 and OpenGL 2.0
- DVD-ROM drive
- QuickTime 7.2 software required for multimedia features
- Broadband Internet connection required for online services

For updates to system requirements, visit [www.adobe.com/products/photoshop/photoshop/systemreqs](http://www.adobe.com/products/photoshop/photoshop/systemreqs) (Photoshop CS4) and [www.adobe.com/products/photoshop/photoshopextended/systemreqs](http://www.adobe.com/products/photoshop/photoshopextended/systemreqs) (Photoshop CS4 Extended).

## Expected ship date

Fourth quarter 2008

## For more information

For more details about Adobe Photoshop CS4 and Adobe Photoshop CS4 Extended, visit [www.adobe.com/photoshop](http://www.adobe.com/photoshop).

## Availability and pricing

Adobe Photoshop CS4 Extended will be available in North America for an estimated street price of US\$999. Adobe Photoshop CS4 will be available for an estimated street price of US\$699. Both can be obtained directly from Adobe or through Adobe Authorized Resellers. To order directly from Adobe, visit the Adobe Store at [www.adobe.com](http://www.adobe.com) or call 1-800-833-6687.

Licensed owners of Photoshop CS3 Extended, Photoshop CS2, or Photoshop CS can upgrade to Photoshop CS4 Extended for US\$349.

Licensed owners of Photoshop CS3, Photoshop CS2, or Photoshop CS can upgrade to Adobe Photoshop CS4 for US\$199.

Licensed owners of Photoshop 5 or 6 can upgrade to Photoshop CS4 Extended for \$899 or Photoshop CS4 for \$599.

Licensed owners of Photoshop CS3 Extended, Photoshop CS3, Photoshop CS2, or Photoshop CS are also eligible for special upgrade pricing to certain editions of Adobe Creative Suite 4.

A complete description of upgrade eligibility and pricing is available in a separate Pricing Overview document. For volume licensing information, contact an Adobe Authorized Licensing Center or go to [www.adobe.com](http://www.adobe.com).

Estimated street prices do not include taxes, shipping, handling, or other related expenses. Information on pricing and support policies outside of North America and for Education customers will be available separately.

## About Adobe Systems Incorporated

Adobe revolutionizes how the world engages with ideas and information—anytime, anywhere, and through any medium. For more information, visit [www.adobe.com](http://www.adobe.com).



Adobe

### Adobe Systems Incorporated

345 Park Avenue  
San Jose, CA 95110-2704  
USA  
[www.adobe.com](http://www.adobe.com)

Adobe, the Adobe logo, Adobe AIR, After Effects, Creative Suite, Flash, Kuler, Lightroom, Photomerge, and Photoshop are either registered trademarks or trademarks of Adobe Systems Incorporated in the United States and/or other countries. Mac, the Mac logo, Mac OS, and Macintosh are trademarks of Apple Computer, Inc., registered in the United States and other countries. Intel and Pentium are trademarks or registered trademarks of Intel Corporation or its subsidiaries in the United States and other countries. PowerPC is a trademark of International Business Machines Corporation in the United States, other countries, or both. Microsoft, Windows, and Vista are either registered trademarks or trademarks of Microsoft Corporation in the United States and/or other countries. All other trademarks are the property of their respective owners. This product may allow you to extend its functionality by accessing certain features that are hosted online ("online services"), provided you have a high-speed internet connection. The online services, and some features thereof, may not be available in all countries, languages and/or currencies and may be discontinued in whole or in part without notice. Use of the online services is governed by separate terms of use and by the Adobe privacy policy, and access to these services may require user registration. Some online services, including services that are initially offered at no charge, may be subject to additional fees. For additional details and to review the terms of use and privacy policy, please visit [www.adobe.com](http://www.adobe.com). © 2008 Adobe Systems Incorporated. All rights reserved. Printed in the USA. 08/14/08



New and enhanced features compared	Photoshop CS4	Photoshop CS4 Extended
<i>Increased Productivity</i>		
Fluid canvas rotation	●	●
Enhanced Pan, Zoom, and large image navigation	●	●
More refined, natural results with Dodge, Burn, and Sponge	●	●
Next generation Adobe Bridge	●	●
Tighter integration with Photoshop Lightroom	●	●
Integrated Kuler for color harmony creation and sharing	●	●
N-up and multiple document view	●	●
More powerful printing options	●	●
Superior performance on very large images*	●	●
Support for multi-touch gestures†	●	●
Extensibility with SWF panels	●	●
Unified tabbed interface with self-adjusting panels	●	●
<i>Unrivalled Editing</i>		
Live, nondestructive corrections with the Adjustments panel	●	●
Re-editable, feathered, density-controlled masks	●	●
Enhanced Auto-Blend with seamless tones and colors	●	●
360° panoramas	●	●
Content-Aware Scaling	●	●
Extended depth of field	●	●
Camera Raw with localized adjustments	●	●
Enhanced Smart Objects	●	●
On-image controls for Curves, Hue/Saturation adjustments	●	●
Clone Stamp and Healing Brush preview cursor	●	●
<i>Breakthrough 3D, Motion Graphics, and Image Analysis</i>		
Direct painting on 3D objects		●
Easy conversion from 2D to 3D		●
Editable 3D properties (scene, materials, meshes, lights)		●
New high quality interactive ray tracer		●
Create 3D composites with 2D images or other 3D objects		●
New, high-performance, non-modal 3D engine		●
Volume Rendering		●
Keyboard shortcuts enabled for the Animation panel		●
Enhanced preview of non-square-pixel images		●
Preview and export audio content and frame comments		●
Animate 3D objects and their textures		●
Enhanced Count tool		●

\* Additional RAM usage requires 64-bit version of Windows and a 64-bit capable computer  
† Requires newer Apple MacBook Pro and MacBook Air computers running Mac OS X Leopard